



Introducing the ultimate protection in Motorsport Anti-Theft / Quick Recovery Systems. This system uses a combination of the latest wireless & supersensitive GPS technologies to help your customers prevent their Motorsport vehicles from being stolen and to significantly reduce recovery times. This web-based tracking system will change the way you look at vehicle security and give you piece of mind that you and your vehicle are safe.

An Alternative to LoJack® with so much more!

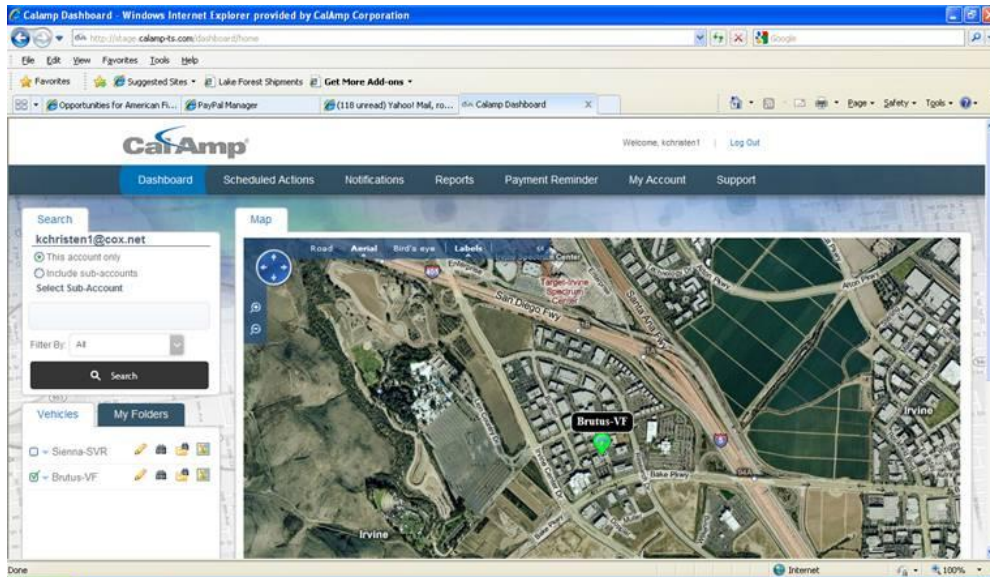
LoJack® is a relatively expensive and antiquated system that relies on old RF (radio frequency) technology and a comparatively spotty patchwork of complying local law enforcement agencies. Our system allows your customers to locate their vehicles online 24/7 with no additional software. Accessible from any web enabled computer or Smartphone; you can instantly pull up the address of where your vehicle is located. You now have the ability to quickly direct law enforcement to the location of your stolen asset. Here are some comparisons:

24hr Web Access: Our 24hr web access gives you the flexibility to monitor you vehicle location, speed, and movement, while offering the best protection in anti theft recovery. You now have the option to locate your vehicle so that you can call professional law enforcement (regardless of the jurisdiction) and give them the location of your vehicle. Competitive devices only allow law enforcement to be notified if your vehicle is stolen, not its location.

Larger Coverage Area: Our Mototrac device operates in all 50 states, US, and Mexico vs. LoJack® that is limited only to certain metropolitan areas in just 27 states. Their coverage is also reduced when you take into consideration that your vehicles recovery hinges on the availability of a LoJack® equipped recovery cruiser and the police have the time to locate the vehicle. With our tracking system you can give precise GPS location information to any 911 operator or on scene officer so they know exactly where your vehicle is, regardless of how they are equipped.

Additional Features

- **Movement/Tow Alert:** This feature will notify the user by phone, email or text, if moved more than 50 meters without their ignition (key) being enabled.
- **Speed Alert:** Worried about your minor's driving habits? This feature will allow you to monitor their driving and set user defined speed alerts that will report every speed infraction that is held for at least 45 seconds.
- **Fastest Daily Speed:** When selected the system will pop up a window reporting the fastest speed of the vehicle on a given day (this features resets every night at midnight).
- **Low Battery Notification:** Notifies user that their vehicles battery is critically low (< 9.5 V for 30 seconds).
- **Internal Battery:** If the main vehicle battery fails or is disconnected, the user is notified. The internal back-up battery, when it's fully charged, can last up to 24 hours with heavy usage. If wired to ignition sense for sleep mode, the back-up battery can last up to 14 days to help locate your vehicle.
- **Tough/Weather Resistant:** Our Motorsport tracker is environmentally sealed to keep up with you and your active lifestyle. It is tested to strict military specifications for shock & vibration. Furthermore, it is factory sealed against salt-spray, dust, humidity, heat, and cold.
- **Ability to track your assets in a broad range of environments:** Our supersensitive technology combined with superior internal GSM and GPS antennas creates a product sensitive enough to track your missing asset inside garages and urban canyons.
- **First Year of Airtime Free!** This includes your initial 300 actions to track and receive alerts immediately.



Easy to Use Web Based Platform

The web-based software provides the user with a comprehensive control and information portal to monitor, track, and control their motorsport assets.

- Get location information
- Change map views
- Get vehicle status
- Send commands
- Manage user & account info
- Schedule alerts
- Get help

Low-Power Management System

CalAmp® designed this tracking system with the inherent battery limitations of motorcycles and motorsport vehicles in mind. The system has the ultimate in power management capabilities so that the user can configure their system to get maximum performance with minimum power consumption, aligned with their personal usage requirements whether it's daily riding or long-term storage. The tracking unit has three operation modes - active, sleep and deep sleep.

Power Usage: On average, this low voltage unit draws less than 1 milliamp of power.

- Locate mode (70 milliamps for less than 1 minute)
- Sleep Mode (10 milliamps)
- Deep Sleep mode (less than 1 milliamp)

Deep Sleep Mode (optional): Once the ignition is turned off the unit will wait 30 minutes, then go into deep sleep mode and set a 50 meter security zone around itself. In deep sleep mode it is not possible to communicate with the unit, therefore the user cannot locate the device (including on the system's web-based map), set up speed alerts or geo-fences, or perform any other action that requires communication with the device.

While in deep sleep mode, the unit is on a "watchdog" mode, waiting to automatically "wake-up" if any of the following occur:

- **Ignition On** - When the ignition is turned on, the unit powers up and stays active until the ignition is turned off. The 50 meter zone alert is disabled while the ignition is on.
- **Vibration/Motion Sensor** - When the built-in motion detector detects vibration from the vehicle (with ignition off) the unit wakes up sending an alert via email and/or SMS Text if the vehicle moves out of the 50 meter security zone (must be activated on web site). If the motion detector detects constant movement for 30 seconds, it will turn the unit on so that the vehicle can be tracked. If the unit detects movement greater than 5 mph, it will turn on and stay on (i.e., not go back into sleep mode).
Note: The motion detector in the current unit is highly sensitive which means the unit may wake up if somebody bumps the vehicle, a noisy truck goes by, etc.
- **Low Battery** - The unit will automatically wake up to check battery voltage and will send a low battery alert SMS Message to the user when the vehicle's battery drops below 10.5V.